



Enflow Information Systems
support@ebuidlingpermits.com

ConstructionTracker

Installing & Uninstalling Manual

Updated Nov 20, 2005

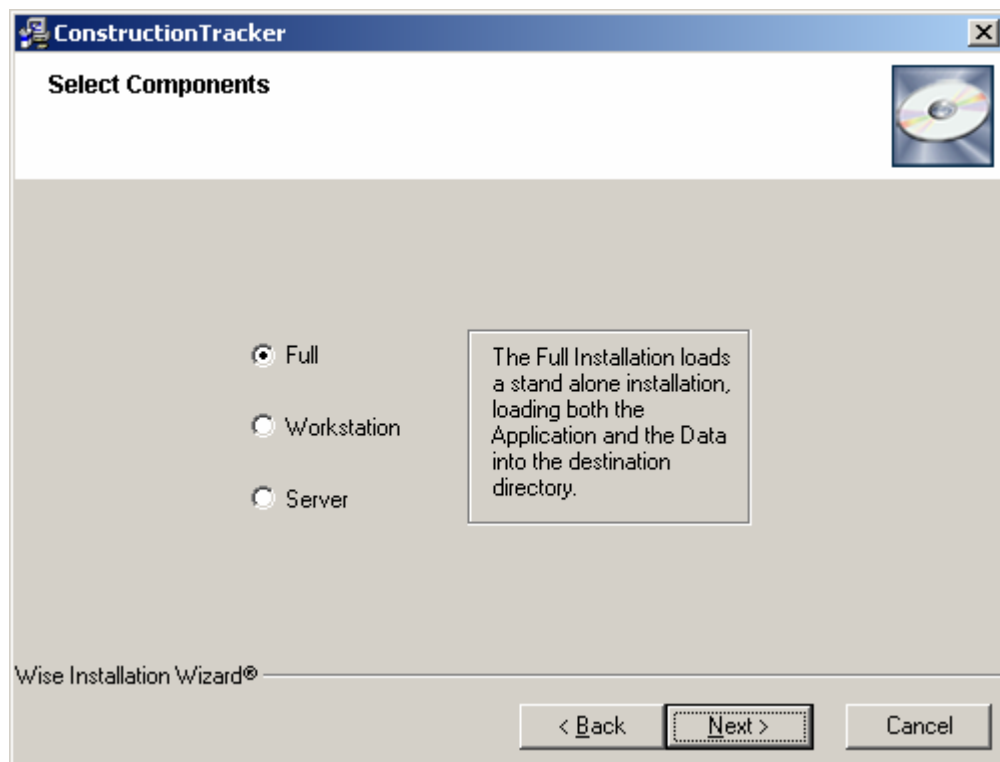
Installing ConstructionTracker

Full Installation (1 PC)

Double click on the ConstructionTracker.exe to install...

Follow typical installation routines until you get this Select Components window and then read and choose one of the following carefully...

1. To install BOTH the front end application and the back end data tables into one folder and onto one computer ONLY – then select 'Full' button when you get to Select Components screen...



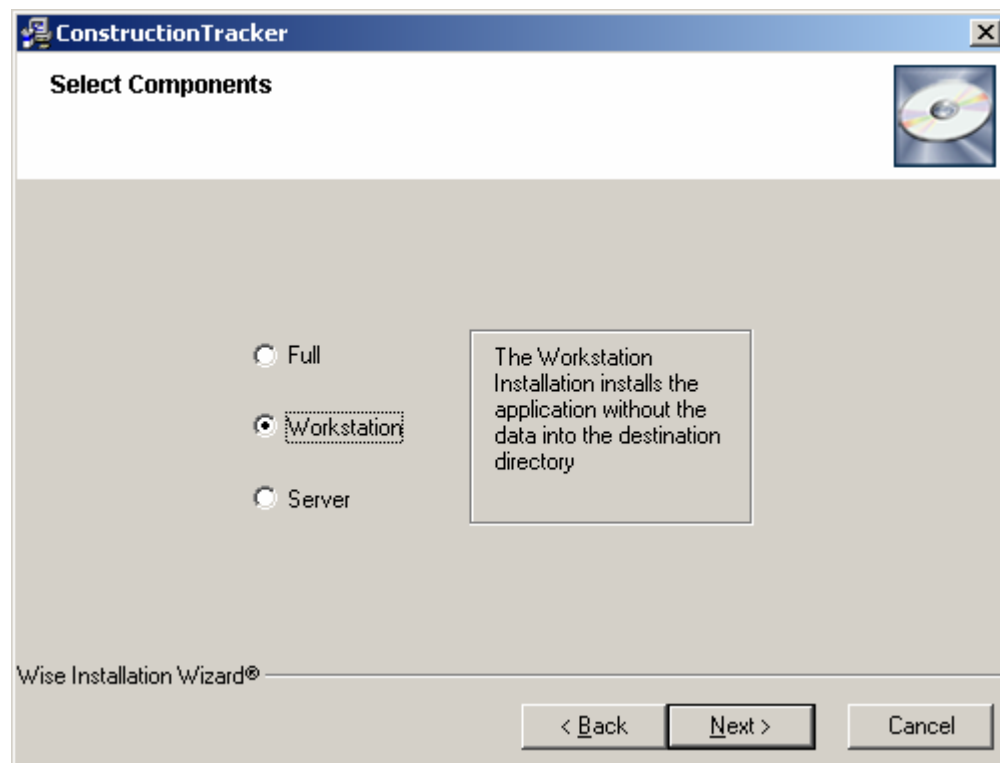
Installing ConstructionTracker

Client Server Installation Front End Install

2. To install to a Client–Server setup (A desktop computer gets a front end application and a server gets the back end data tables) then follow this procedure...

- a. To install the ConstructionTracker front end to a specific computer workstation select the Workstation button as shown below and continue installation.

If you had a License for 5 ConstructionTrackers you would do this 1- 5 times...

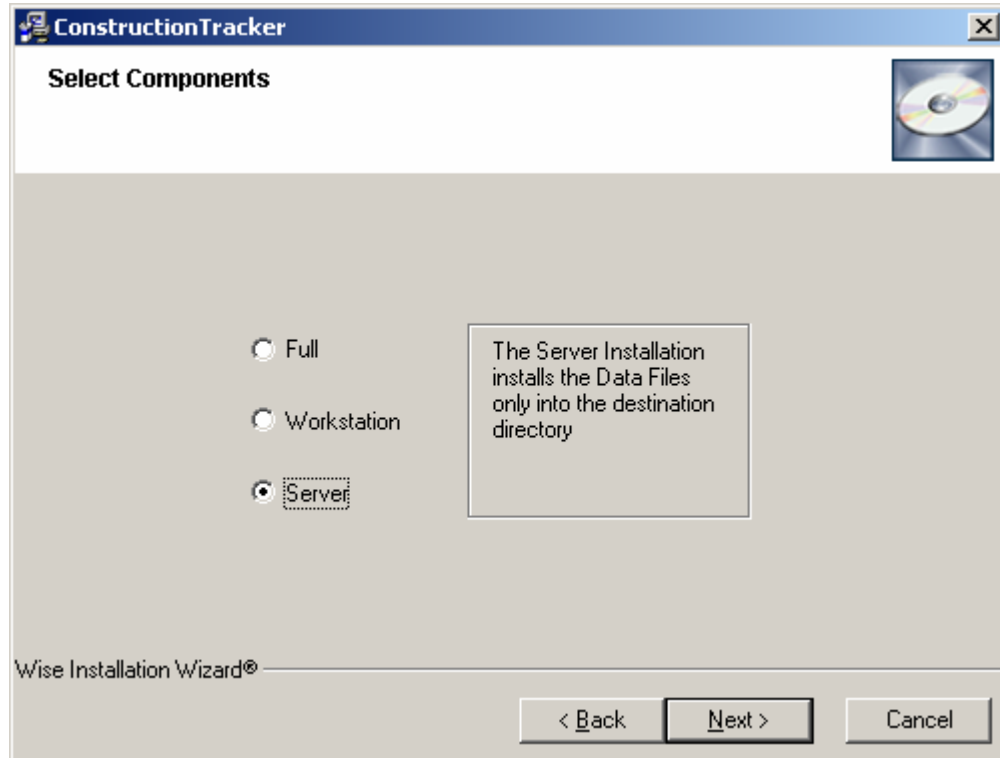


Installing ConstructionTracker

Client Server Installation Back End Install

- b. To install the data tables back end to the server choose the Server button and continue the installation.

If you had a license for 5 ConstructionTrackers you would do this ONLY ONCE...



The rest of the installation is typical and routine for a software installation...

Installation problems... email support at

support@ebuildingpermits.com

Using the Demo Version & Upgrading to the Full License Version

After installing the Demo Version of ConstructionTracker you will get a message box telling you how many days are left in the demo After you click the OK button then you will see the ConstructionTracker – Demo Mode screen...

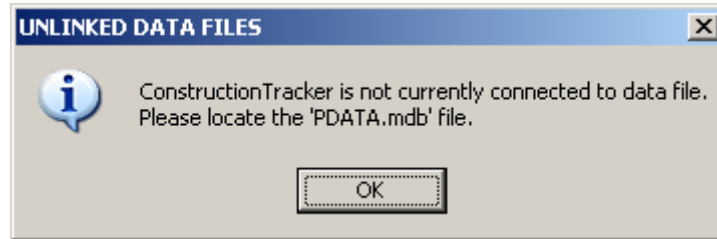


1. Click 'Open Demo' to immediately try ConstructionTracker free...
2. Click 'Buy Now' to purchase a one year license subscription for ConstructionTracker...
 - a. You will be taken to web page to purchase it
 - b. Fill out web form – submit payment too – receive unlock password key in email
3. Click 'Unlock Me' to open the unlock form – read instructions – click 'Proceed' and then insert unlock password in proper area..
4. Click 'Exit Here...' to immediately close the application...

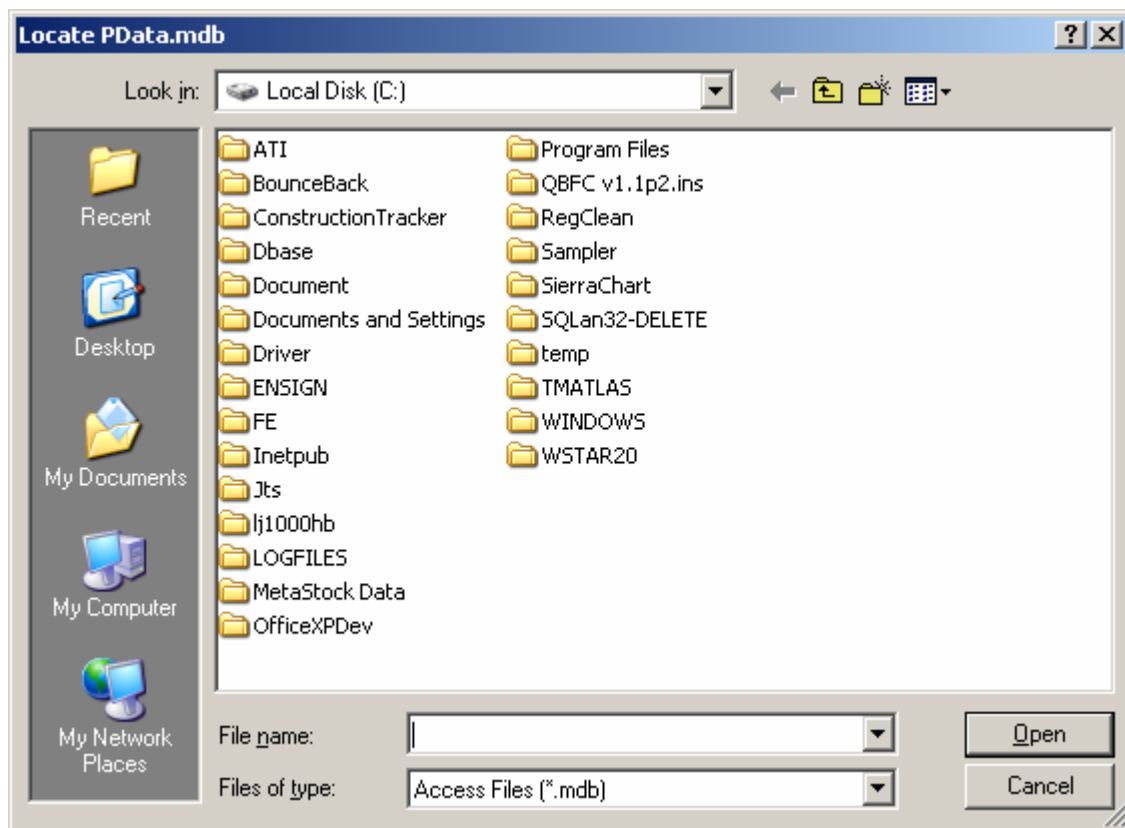
For support by email
support@ebuildingpermits.com

ConstructionTracker(™) Connecting to the Data Tables Storage Depot

If ConstructionTracker needs to connect from its front end software interface to its backend data tables storage depot it will notify you of this by popping up the following message after you click on a button to go into it...

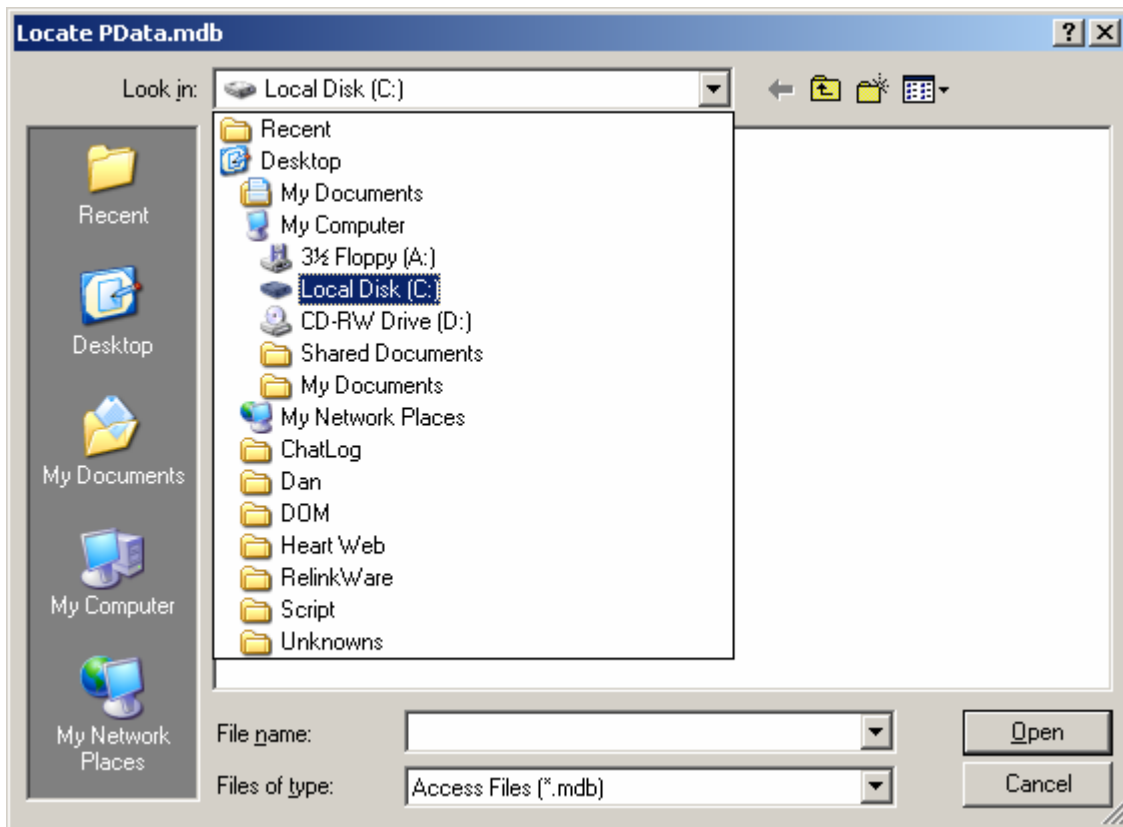


Click on the OK button and then a Browse Dialog box will open up allowing you to browse to the directory where the data tables back-end PDATA.mdb are located...

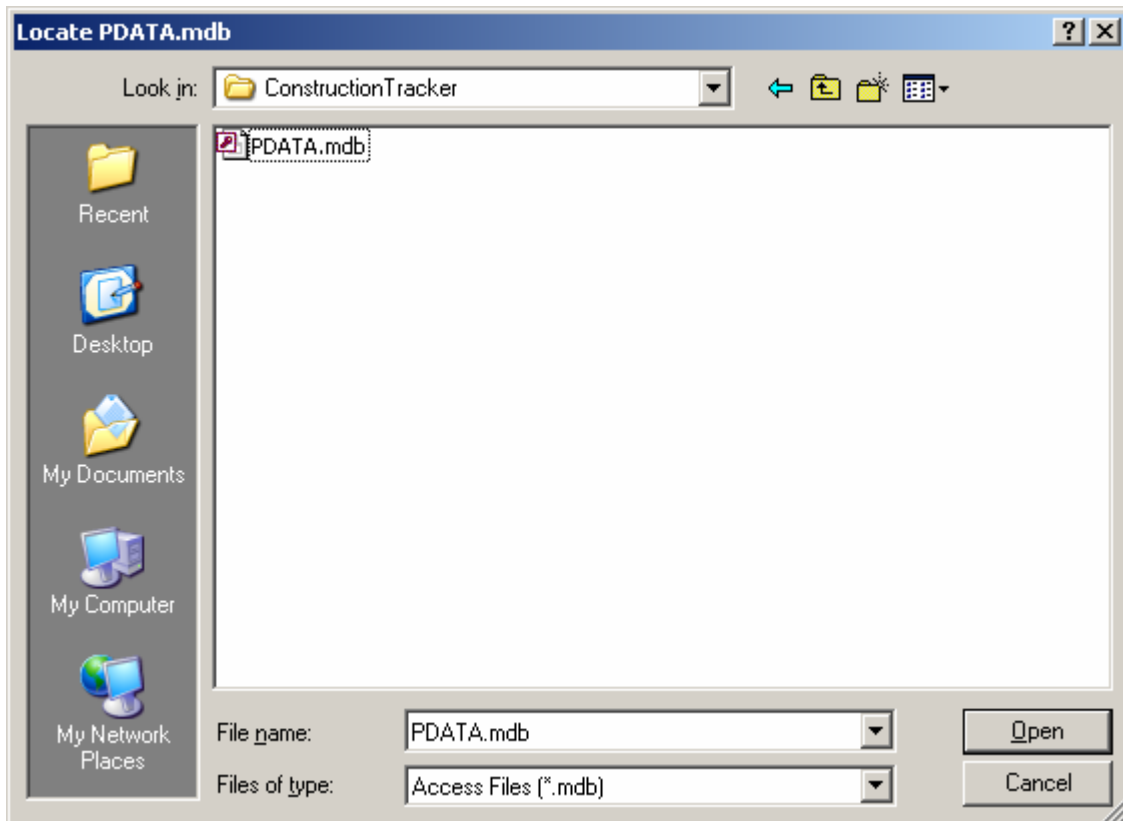


Click on the Look in: drop down upper menu to go to the directory / folder where PDATA.mdb resides...

ConstructionTracker(™) Connecting to the Data Tables Storage Depot



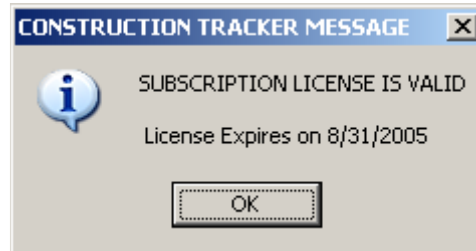
When you locate the directory / folder / path... where PData.mdb resides double click on the file and it will re-connect the front end to the back end and open ConstructionTracker for you to use.



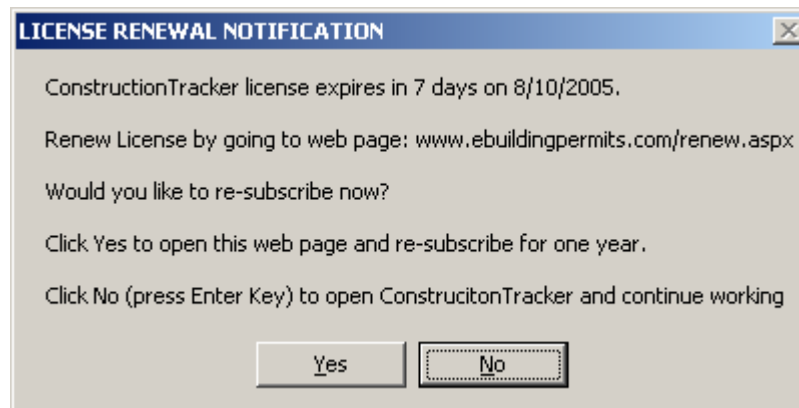
ConstructionTracker(™) Subscription & License Validation

After you have 'Unlocked' ConstructionTracker with an emailed password after purchasing a one year subscription...

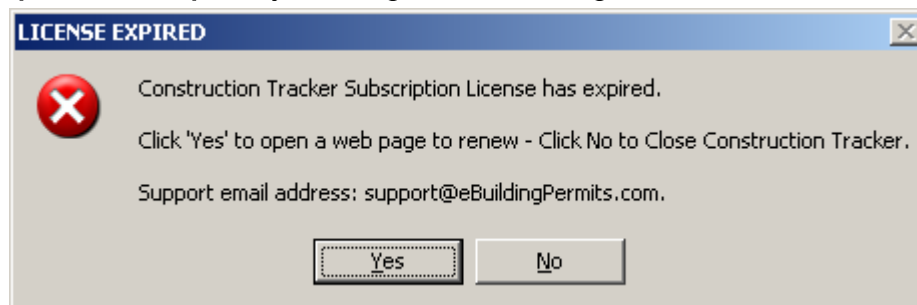
If the subscription is valid then you will get this message box... with a license expiration date.



When the subscription has less than 14 days left till expiration you will get this message box...



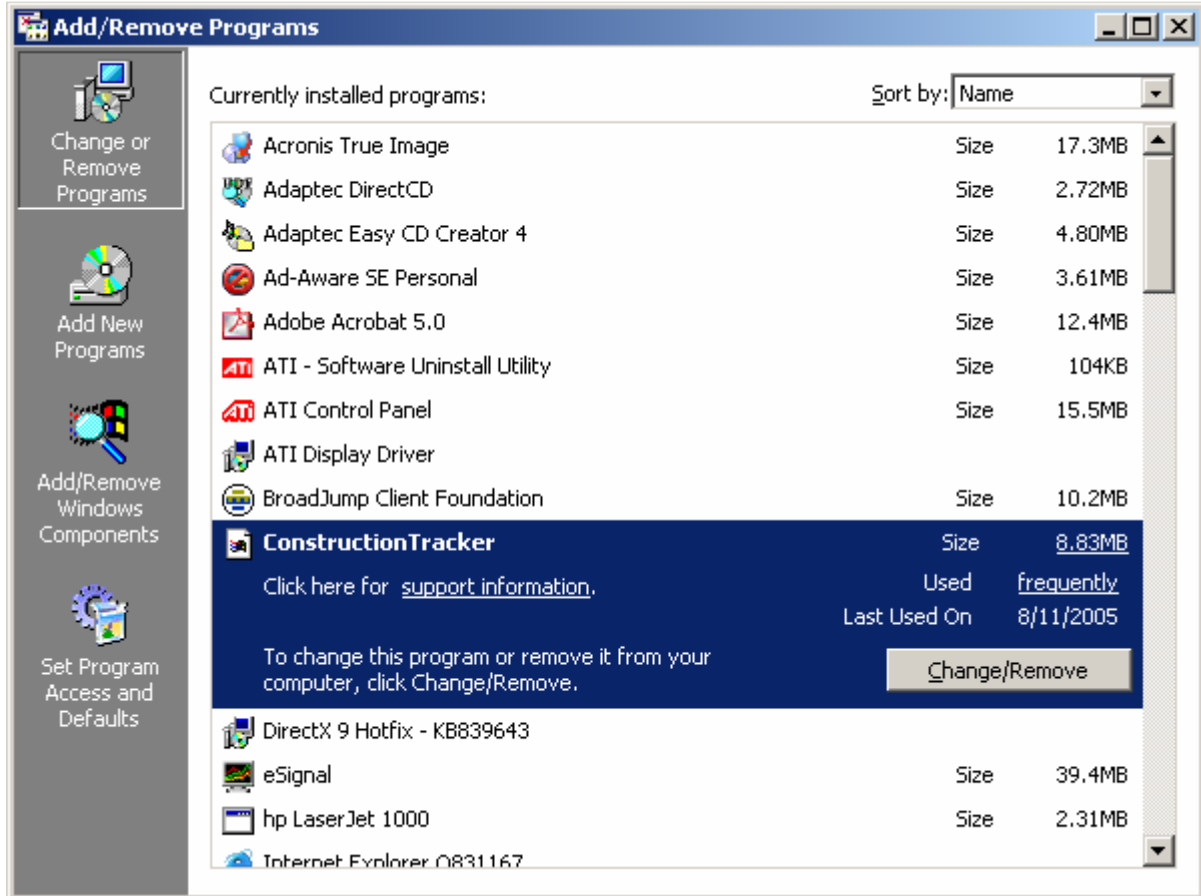
When the subscription has expired you will get this message box...



Uninstalling ConstructionTracker

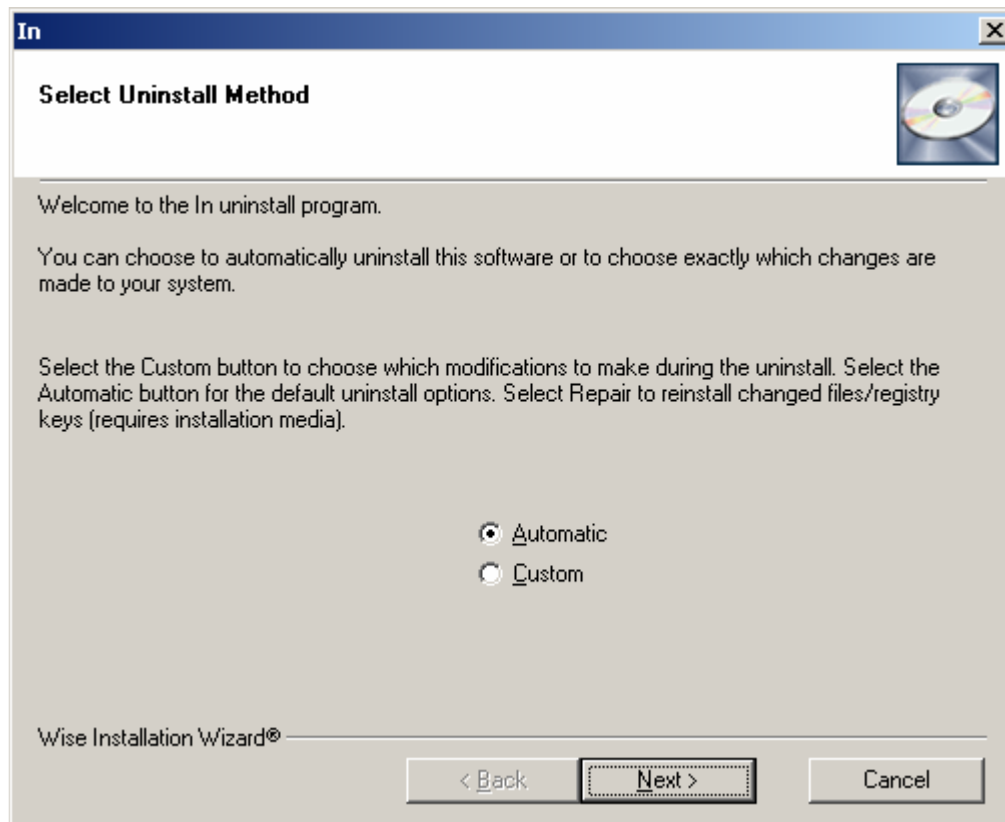
Go to add/remove programs area in control panel...

Find/Click on ConstructionTracker in add/remove list - click on the Change/Remove button...



A Select Uninstall Method screen will open up next... shown just below...

Uninstalling ConstructionTracker

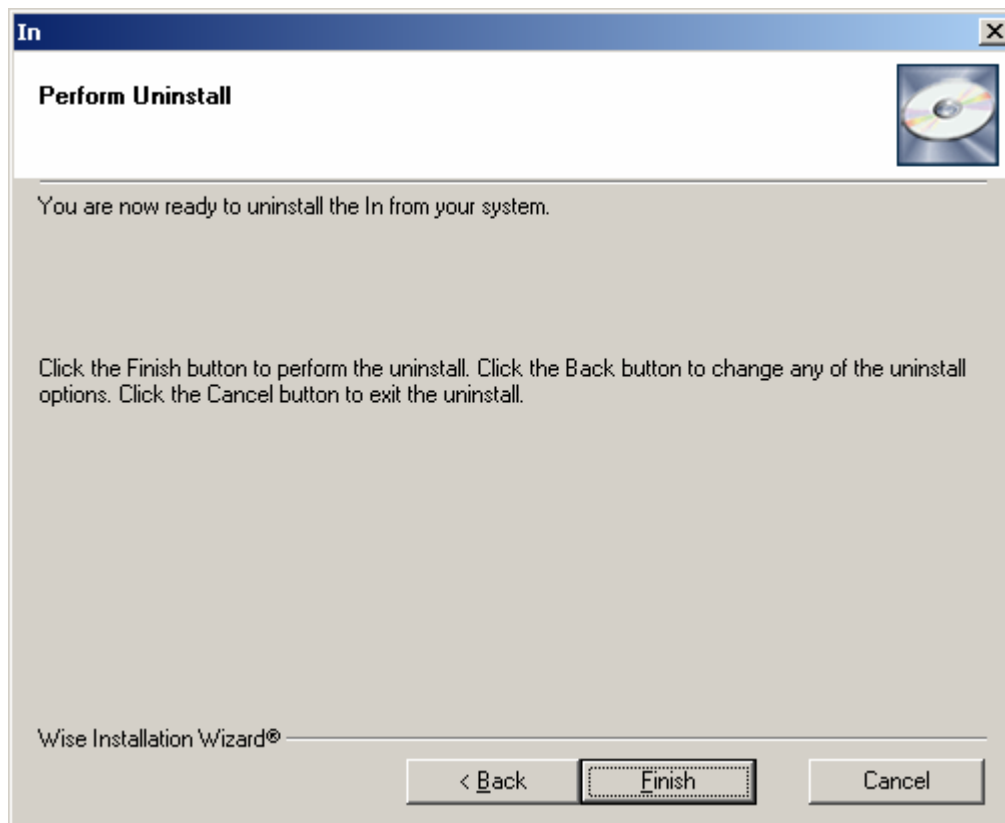


Accept the Automatic choice (Default choice usually)... by clicking the Next > button...

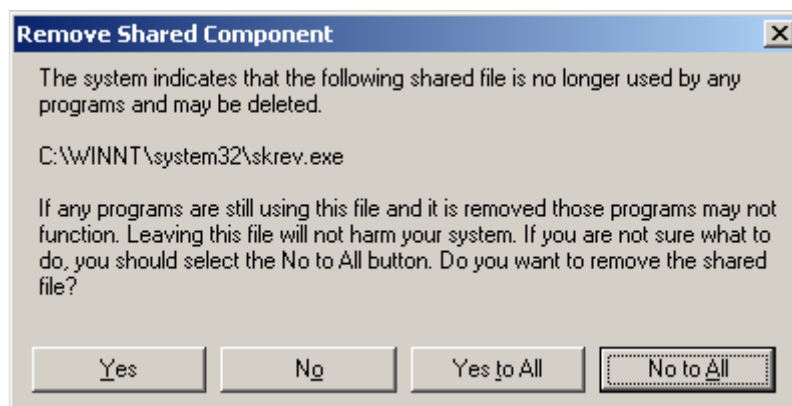
Up pops the next screen Perform Install asking if you want to continue with the uninstall or cancel it...

Uninstalling ConstructionTracker

To continue with the uninstall click the Finish button...

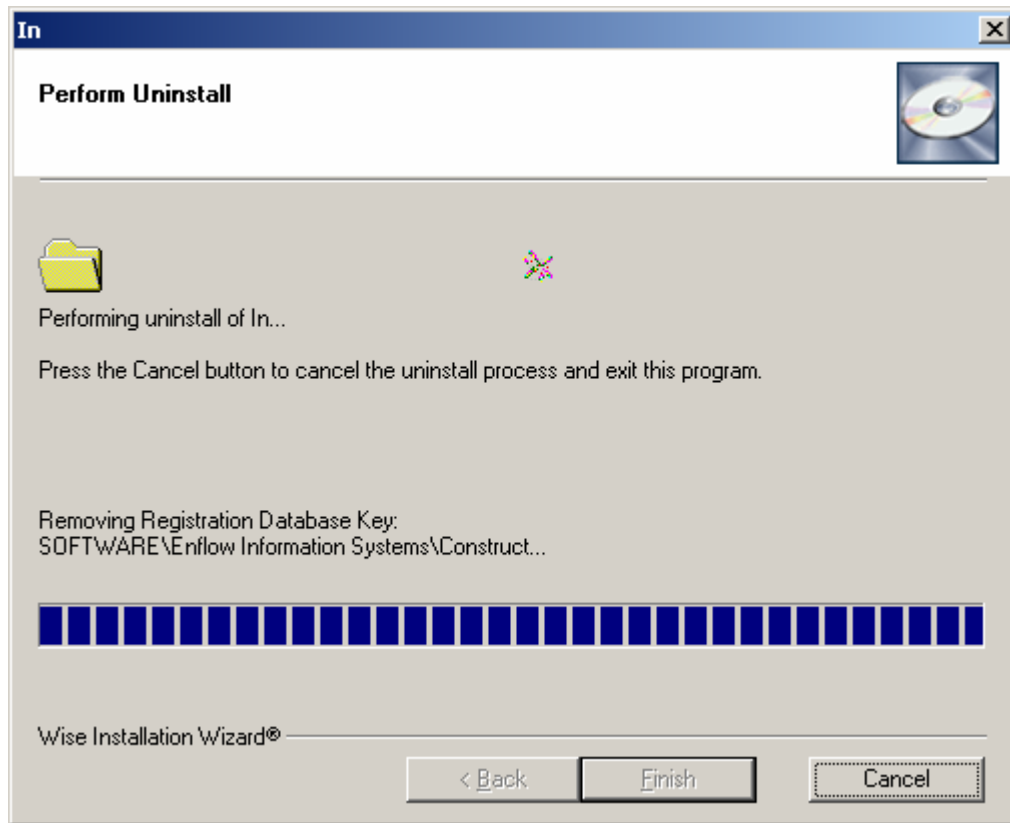


Depending on your operating systems (Windows 98, 2000, xp, etc.) A Remove Shared Component dialog box 'might' show next asking if you want to remove unnecessary files (3 of them) – 'Yes to All' is fine... or click through each one and say yes or no...



Uninstalling ConstructionTracker

After you say yes or no to the Remove Shared Component screen the uninstall will execute



When the uninstall is finished then the add/remove components area will no longer show ConstructionTracker as an installed software product...

Uninstalling ConstructionTracker

ConstructionTracker is gone...

